

# SuiteMed™ IMS for Endocrinology



## A fully integrated EHR / Practice Management solution specifically designed to meet the needs of the Endocrinologist

SuiteMed IMS Endocrinology EHR is an intuitive solution with advanced features enabling Endocrinologists to automate their inefficient manual processes and achieve a true paperless environment. The system integrates the entire care delivery process enhancing the healthcare experience for you and your patients.

### Endocrinology Templates and Workflow

Automate documentation, complete exams and diagnostic tests quickly and easily with point and click Endocrinology template content and workflow. The template editor lets practices customize and add templates to suit individual preferences, allowing physicians to work as their particular practice and personal preferences demand. Templates feature intuitive pick-lists and checkboxes to simplify documentation, encouraging chart completion.

If you do physical exams, hormone challenge tests and standard phlebotomy in different rooms, automatically migrate this patient data from any computer throughout the office or between multiple locations. SuiteMed IMS makes all patient records instantly available for each staff member as the patient flows through your office during their appointment. From ordering special materials prior to nuclear studies, to tracking who logs into the EHR, a lot of repetitive tasks can be streamlined into a few clicks to curb human error and improve your practice's measurable outcomes.



SuiteMed IMS, version 14  
CC-1112-372910-1

SuiteMed IMS, version 14 is an



Ambulatory EHR



## SuiteMed IMS for the Endocrinology Practice

- Simplify patient visits with endocrinology-specific templates for faster, more comprehensive documentation, storage, and retrieval of detailed patient data.
- Enhance workflow with a paperless office. Gain better communications, greater efficiency, and deliver better patient care.
- Improve overall revenue with accelerated reimbursement, automatic coding recommendations, decreased denials, and increased patient flow.
- Built-in reporting tools scrutinize your practice's patterns for pay-for-performance, meaningful use requirements, quality measurements, and business analysis.
- Access patient information at the point of care, no more chart-pulls, and no more misplaced records.
- Eliminate redundant paperwork, enable patients to complete forms with integrated patient portal, and in-office kiosk.
- Achieve interoperability and connectivity with other health care entities, pharmacies and labs for referrals, orders, and receipt of results.
- Local ongoing support from a national team of industry experts -- SuiteMed Authorized Partners, dedicated to serving the needs and interests of the Endocrinologist.
- Automate prescription writing, drug interaction and formulary checking with automatic alerts, and a fully-integrated drug database.
- Easily deliver patient education materials for dermatology-specific tests, procedures, and disease management.



### Up to \$44,000

The Medicare and Medicaid EHR Incentive Programs will provide incentive payments to eligible professionals, (Chiropractors are eligible) as they adopt, implement, upgrade or demonstrate meaningful use of certified EHR technology.

#### Purchase with Confidence

SuiteMed IMS is guaranteed to meet all of the ARRA meaningful use criteria and requirements or your money-back. How can we guarantee you'll be qualified for HITECH Act incentive payments?

#### CCHIT Certification

SuiteMed IMS has received the most current CCHIT certification, and, as of September 30, 2010, the most recent version was recognized by CCHIT as a Stage 1 Meaningful Use certified Complete EHR with ONC-ATCB 2011/2012 Certification, meeting all criteria published by the U.S. Department of Health and Human Services (HHS) in the Final Rule.

#### Easily Become a Meaningful User

SuiteMed IMS features a unique Meaningful Use Dashboard that quickly identifies meaningful use deficiencies. Review clinical data with graphical charts identifying patients not meeting clinical measures quickly and easily. Tasks, reminders, alerts and letters can be generated to improve meaningful use status.

**Registration begins Jan. 3, 2011. Participate early to get the maximum incentive payments!**



## SuiteMed IMS Endocrinology Specific Features

- **Authorization / Referral Tracking**

Set authorization requirements by procedure and insurance, Insurance approved pre-printed authorization forms, Reduce missing authorizations and claim rejections saving time and money.

- **Single View for Entire Patient Information**

Simplified workflow increases productivity and quality of care. Access demographics, history, clinical notes, physical exams, trends of electronic lab results, and clinical alerts while administrating the entire treatment plan from a single screen.

- **Exams**

Predefined templates are available for conducting physical exams on any part of the body. Templates also include medical drawings that enable endocrinologists to comment and import images visually clarifying the patient's clinical condition.

- **Clinical Forms and Reminders**

Comprehensive visit forms such as Diabetes Type-1, Type-2, and weight loss tracking (before and after results) are available. Clinical reminders can be established based on age, gender, and medical conditions. Diagnoses, procedures, and medications can be linked with reminders for automated health maintenance alerts.

- **Document and Image Management**

Eliminate paper by capturing, scanning and attaching paper charts, Diabetology images, photographs, x-rays, and medical drawings directly into the electronic chart.

- **Lab Interfacing and Tracking**

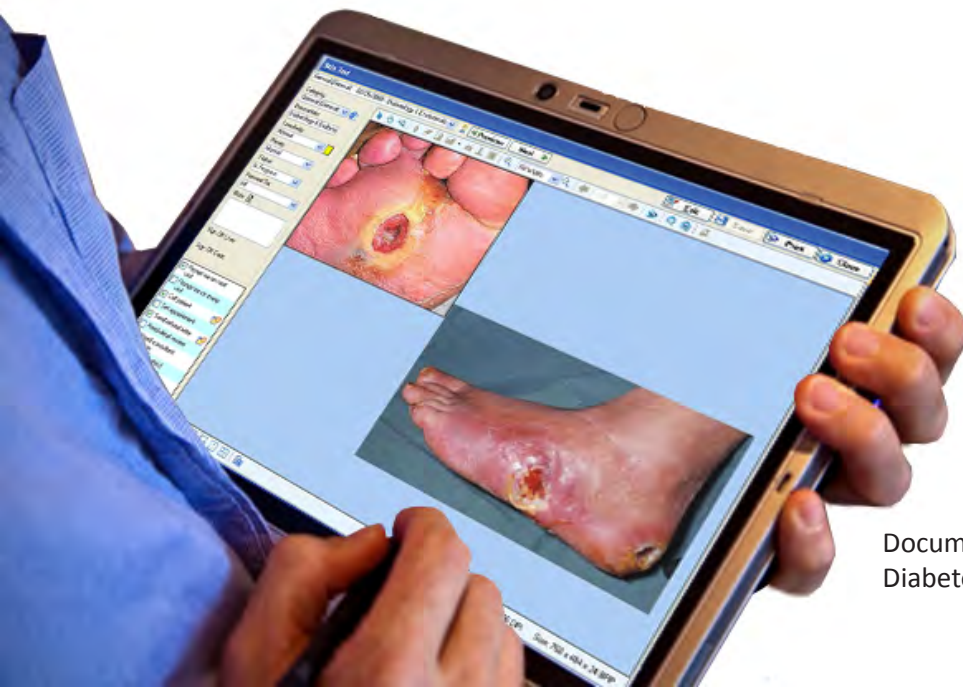
Electronically transmit and receive lab orders. Simplify decisions with automated flagging of abnormal results, analyze, track, and trend results.

## The SuiteMed Difference

SuiteMed's Ambulatory Electronic Health Record (EHR) and Practice Management software are fully integrated sharing a single database, to meet your unique clinical and administrative needs. Our solutions can be implemented as an integrated solution or separately as stand-alone applications and can be deployed as a client-server or web-hosted solution.

It takes more than just software to deliver success in today's complex practice. That's why SuiteMed ensures your success with our local Authorized Partners, experienced in health IT and certified in our solutions.

SuiteMed Authorized Partners are with you all the way, from demonstrating SuiteMed IMS to implementation and beyond – your local single-source solutions partner. An Authorized Partner is always available for fast on-site or phone support, training and revenue improvement services so you can concentrate on practicing medicine not technology.



Document and Image Management of Diabetology images, photographs, etc.

## Why Laser Logics for your EHR solutions?

Our firm is vastly different in that we are a total turn-key healthcare solutions partner. Here are a few reasons why we are different:

Schedule  
a Demo  
Today!

- **Integrity:** our philosophy is simple in that all we do adheres to complete integrity, to our clients and ourselves. We earn the trust and respect of our healthcare clients and keep it.
- **Experience:** we offer a highly trained and knowledgeable team with over 20 years of IT; security; practice management, certified billing/coding; and business management experience.
- **Hardware/Network:** we offer full hardware, networking and security services. A poor network structure will render any EHR problematic. If an EHR system is difficult and problematic – your staff won't use it.
- **Training:** we offer training options on every aspect of the EHR system so that the client can utilize their new system to maximum potential.
- **Effort Coordination:** healthcare providers and their staff are already stretched to the max with daily responsibilities with no time to coordinate multiple vendors to get an EHR operational. We solve this problem being a total solutions healthcare vendor (1 vendor=1 call).

We offer a select portfolio of services and products that are highly integrated resources to aid healthcare providers to strengthen their resources and empower them with tools to improve efficiency, productivity, profitability, while improving the quality of healthcare delivery.

- **Remote Data Backup:** meeting HIPAA compliancy.
- **Monitoring:** most healthcare practices do not have full time on-site IT staff our solutions reduce costs yet keep practices productive.
- **Revenue Cycle Management:** integrated products and services to keep your cash flow flourishing.
- **Billing Services:** Medical billing services tailored to your unique needs.

Our select portfolio of products and services benefits our clients by: effectively managing healthcare technology; meeting or exceeding goals; coordination of technology efforts to reduce staff frustration with change; improve healthcare efficiency and productivity; reduce errors and thus mitigating risk exposure of client.

"I have worked with many practice management systems, and IMS, by far, is the best system I've used. I'm impressed with the ease of working the AR as well as doing claim corrections. I like the fact that I can do almost every thing I need to do in a patient's account through the "ledger."

Deborah Ruffner, CPC

Carolina Foot Care, Statesville, NC



Authorized  
Partner



Phone: 888.576.3164

Cell: 336.757.0206

eMail: [Info@synergy-healthcaresolutions.com](mailto:Info@synergy-healthcaresolutions.com)

Visit Us: [www.LaserLogics.com](http://www.LaserLogics.com) (Comprehensive IT Services)  
[www.SuiteMedSolutions.com](http://www.SuiteMedSolutions.com) (EHR Solutions)  
[www.eMedicalBillingSolutions.com](http://www.eMedicalBillingSolutions.com) (Comprehensive Certified Billing/Coding Solutions)  
[www.Synergy-HealthcareSolutions.com](http://www.Synergy-HealthcareSolutions.com) (Comprehensive Healthcare Solutions)